

Senator
Meetings & Incentives



Sample Programme

PRAGUE

4 days | 70 pax





PRAGUE – THE GOLDEN CITY

‘Prague – the golden city.’ There is no other town in the whole of central Europe that has been so often and so widely praised by figures from all spheres of the arts. Rainer Maria Rilke described his birthplace, as “a vast and rich of epic of architecture”, and Goethe labeled it “the most beautiful jewel in the Bohemian crown”. The 19th-century Czech writer and journalist Jan Neruda, whose characteristically humorous literary depictions of Prague are still popular with readers today, claimed that “there is no other town to rival Prague in beauty”. The city of 100 spires, “Golden Prague”, is a jewel in the heart of the new Europe. Culture, tradition and a lively atmosphere present themselves in beautifully restored cultural monuments and former aristocratic palaces. The awe-inspiring panorama of the castle and St. Vitus Cathedral capture the heart of every visitor and a walk across Charles Bridge is a must...



CZECH REPUBLIC – BASIC FACTS

Official title

Czech Republic (Česká republika)

Area

78,864 square kilometres

Neighbouring countries

Germany, Poland, Austria and Slovakia

Population

10,300,000

Capital

Prague (1.2 million people)

Other major cities

Brno (388,596), Ostrava (325,827),
Pilsen (171,908), Olomouc (106,278)

Administrative language

Czech

Religion

Predominantly Roman Catholic (39.2 %), Protestant (4.6%),
Orthodox (3%), Atheist (39.8%)

Political system

Parliamentary democracy

Currency

Czech crown - CZK (Kč), 1 Kč = 100 h (haléřů) coins: 1, 2,
5, 10, 20 and 50 Kč
banknotes: 100, 200, 500, 1000, 2000 and 5000 Kč



CZECH REPUBLIC – BASIC FACTS

Time zone

Central European Time (CET), from April to October - summer time (GMT + 1, GMT + 2)

Climate

temperate, four seasons, a mix of ocean and inland climate, changeable winters, warm summers. The average daily temperature in January, the coldest of winter months is about -2°C, in July, the warmest month, about 20°C.

Telephone numbers

The country telephone code for the Czech Republic is +420

Voltage

220 v/50 hz

State and public holidays

January 1st - New Year's Day, Easter Monday, May 1st - May Day (Labour Day), May 8th - National Holiday - Day of Liberation from Fascism, July 5th - National Holiday - Day of Slav Missionaries, July 6th - National Holiday - Master John Huss (1415), September 28th - Saint Wenceslas Day, October 28th - National Holiday - Foundation of Freedom and Independence, November 17th - Velvet Revolution Day, 24- 26 December - Christmas

Visa requirements

The list of countries whose citizens require a visa in order to visit the Czech Republic can be found here:

http://www.mzv.cz/jnp/en/information_for aliens/list_of_states_whose_citizens_are/index.html



Location and Destination



**Czech Republic
'The Heart of Europe'**

Accessibility

Transportation

Situated in the heart of Europe, Prague represents a major transport junction and an ideal strategic location for international meetings.

Air

Prague airport is holder of the prestigious IATA Eagle Award for the Most Deserving Airport 2011, Voted the Best Airport in Eastern Europe in 2005, 2007 and 2009, Maximum of 30 minutes' drive from/to the city centre, 12 million passengers a year, 53 airlines fly from Prague to 130 destinations. More info at <http://www.prg.aero/>

Rail

Four rail terminals - Prague Main Station (Praha hlavní nádraží), Holešovice, Prague - Smíchov and Masarykovo nádraží connected with Metro lines B and C, Rail connections with cities throughout Europe

Road

Prague is a major crossroads for European East-West and North-South road traffic. Highways and motorways link Prague with all surrounding countries. On the motorway it now takes only two hours to reach the German borders



Why Senator Meetings & Incentives? Why Prague and Czech Republic for your event?

Senator is based in Prague and is a Czech DMC covering Central Europe. We consist of professional multilingual staff with many years of experience. One of our event specialists handles your event from the beginning till the last invoice. We are flexible and available 24 hours a day on our mobile phones for our business partners and our clients.

We are specialists in:

- Meetings and Incentives
- Conferences, Congresses, Symposia
- Product Launches
- Company trainings
- Business and Leisure Travel
(air tickets, we are IATA agency)
- Special interest groups and Cultural Events
- Sports Groups
- Tailored programmes for individual clients



Owners :

Martin Lehky – Managing Director

Martin started on the clients side, he used to work for international companies, for example Sun Microsystems. Originally, he is a lawyer, he graduated at Charles University.

Katerina Benesova – Sales Director

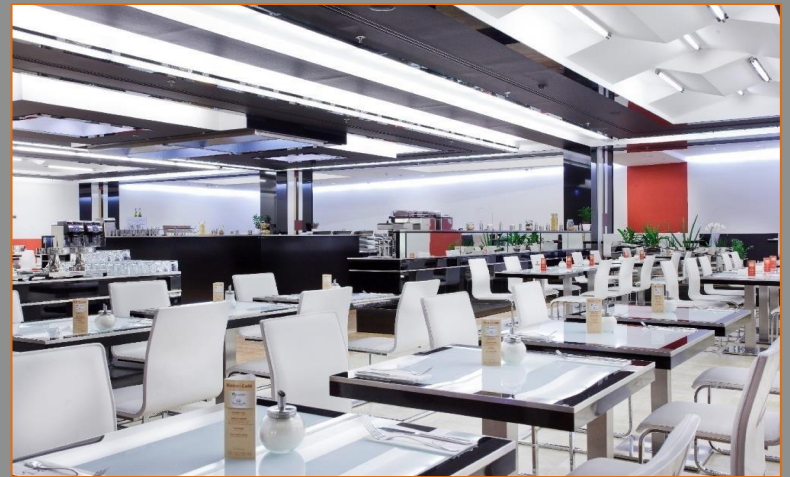
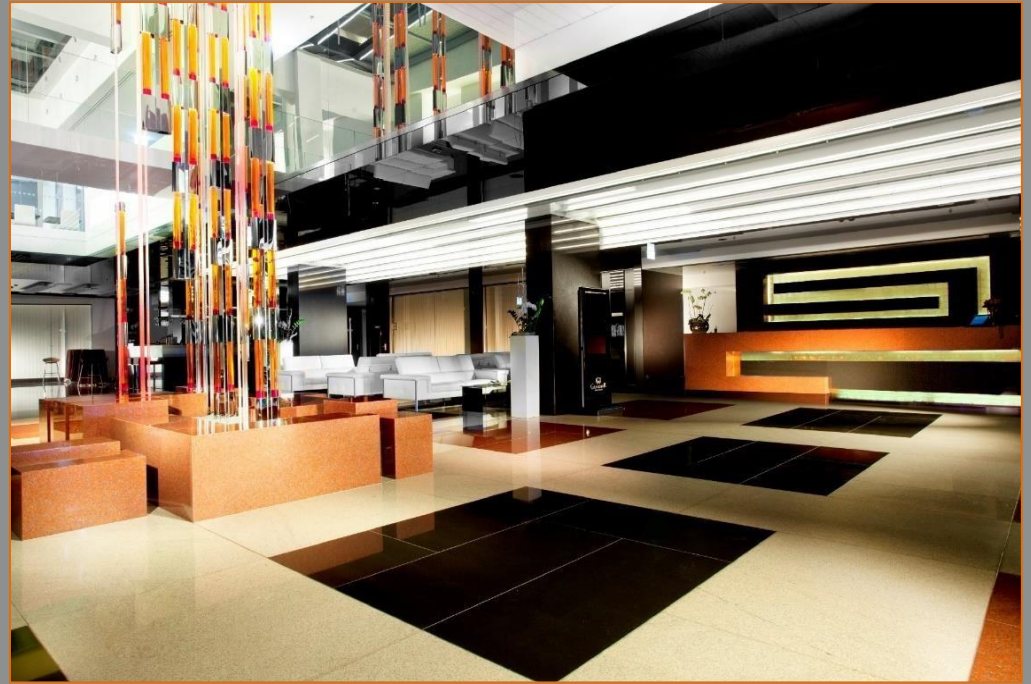
Katerina graduated International relations and Tourism at the Economics University of Prague. For several years she worked for the travel department of Czech Airlines.

Andrea Hantscherova – Senior Event Manager

19 years in this industry, traveled worldwide and worked abroad for 1 year. She has been working in Senator in the outbound division, so she knows exactly your needs and requirements.







DAILY ITINERARY

	DAY 1	DAY 2	DAY 3	DAY 4
AM	Arrivals	Transfer in historical cars iPad scavenger hunt at Prague Castle	Full day excursion to Karlovy Vary	Time at leisure Check-out and departures
Lunch	Arrivals	Lunch and wine tasting at Villa Richter	Grandhotel Pupp	
PM	Old town walk and private cruise on the Vltava river	Lesser Town (Mala Strana) and Graffiti Atelier at John Lennon wall Charles bridge	Karlovy Vary	
Evening	Transfer to the restaurant by historical tram Welcome Dinner at Municipal house Overnight at Prague	Dinner at White horse Overnight at Prague	Farewell evening at DUPLEX – hot club in Prague! Overnight at Prague	

Prague Airport and transfers

Vaclav Havel Airport Prague has 2 terminals: Terminal 2 handles all flight from/to the Schengen countries and flights from all other destinations operate at Terminal 1. The two terminals are very close to each other, in fact, they are in the same building. The average transfer time to the city center is approx. 20-30 minutes.

In case of scattered arrivals we offer different size vehicles. We can offer a fleet of cars, minivans and coaches that meet the latest requirements of the European Union with air-conditioning and seat belts.

Optional: Welcome service at Vaclav Havel airport

Girls and boys dressed in Czech national costumes welcome guests at Prague Ruzyne airport in the arrival hall (can be one only, if client requests it) doing a typical Czech welcome – offering fresh bread with salt. If clients wish, they can also offer a shot of Becherovka



Afternoon

OLD TOWN walk and private cruise on the Vltava River

Follow our guide and let the city, with a secret to discover behind every corner, enchant you. The city walk views Old Town Square providing a dazzling Panorama. Stand in the middle and turn in a slow circle: it's as if all the most charming city streets of Europe were stretched around you. Every building is different in every detail - roof, windows, doors and colors. The Old Town Hall, begun in the 14th century, has developed in slow bounds, to match the municipality's growth in size and importance. Neighboring houses were incorporated and modifications continued to be made until the 19th century. The most obvious highlight of the Old Town Hall is its 15th century Astronomical Clock. Every hour on the hour, clockwork figures on the tower's facade enact a timely story. After a look around Old Town Square, the city walk continues to the Estates Theatre, the theatre where Mozart's "Don Giovanni" was performed for the first time. It was Mozart who said: "My Praguers understand me".

The Saloon Speed ship "Nepomuk" Anno 1933 is the oldest, and arguably, the most beautiful vessel on the Vltava river. During the restoration of the "Nepomuk" everything was done, to put the vessel back in pristine condition. All materials, fittings, furniture and equipment assembled, are true to the original.

"The Nepomuk" offers its guests a spectacular view of Prague, the river, the castle and the bridges and you enjoy all this while having a great cocktail.

Duration: 3 hrs

Location: CityCentre

Walking + Cruise



Pre-dinner

HISTORICAL TRAM RIDE

There is also the possibility to enjoy an old-timer tram for the transfer from the hotel to the restaurant, with music and refreshments on board. The oldest trams date back to the beginning of the 20th century and you can choose from selection of the historical trams prepared especially for your group.

Depending on customer requirements, the route and length as well as the boarding and disembarking locations. Upon customer request, refreshments and music can also be provided in trams.

One way transfer takes approx. 20 minutes



Evening

Plzenska restaurant at Municipal house

In the basement of the Prague's Municipal house there is a beautiful Art Nouveau period Pilsen restaurant offering classical Czech meals and superb Pilsen beer. In the evening you can listen to the typical Czech music upgraded by live entertainment of accordionist or Duo Svejč.



*Morning***Transfer by old-fashioned car**

You will start the full day program by the special transfer: with historical cars (for ex. Praga, Laurin and Klement etc.) Capacity of 1 car is for max 4 pax. Cars are not heated, but we are sure that you will appreciate cca 20 min ride with these unique old vehicles, which you cannot see on the streets anymore...



IPAD SCAVENGER HUNT - rally

We offer an interactive iPad Prague Castle tour. After the short briefing, we divide the people into small teams. Each team gets an iPad2 with instructions. Every group follows instructions on the iPad and answer questions about Prague and the Czech Republic, also, groups use the iPads for making videos of Czech language lessons, sing a song competition, use map and navigate to bonus checkpoint, use digital compass, take photos during the game. iPad2 batteries could easily last for all day game.

Duration: approx. 2.5 hrs / starts at Strahov monastery and ends at the restaurant Villa Richter for lunch.

Location: Prague Castle area



VILLA RICHTER – winetasting and lunch with splendid view

Located in the middle of one of the oldest vineyards in Bohemia.

Villa Richter draws inspiration from the best culinary traditions of the surrounding countries of the former Habsburg monarchy, which helped form the gastronomic scene in Prague in recent centuries. Seated in the Biedermeier noblesse of our dining salons, guests can enjoy gems of Austrian, Hungarian, Slovenian, Tyrolean, Croatian and Jewish cuisine, given a modern twist by the head chef.

Cuisine: Local and International – Modern

Capacity: Total 240 seats in different rooms – Piano Nobile: 40 + 15+10/ Piano Terra 120+15 seats

Style: Elegant

Location: City Centre – with breath-taking view at the city

Timetable:

13:00 Arrival of the teams

13:15 Wine tasting in Piano Terra

13:45 lunch in Piano Terra

15:30 departure to the bus parking



Lesser Town (Mala Strana) and Graffiti Atelier at John Lennon's wall

Little Quarter (Mala Strana) was founded in 1257 and spreads on slopes under the Prague Castle. Mala Strana hasn't changed much during the last few centuries; only a few buildings were constructed after the end of the 18th century. Mala Strana can be proud of its impressive baroque palaces and old houses. Lets start with famous Nerudova street named after the poet and journalist Jan Neruda, Via Nerudova is the picturesque narrow street that leads up to the Prague castle as a part of Royal Way. There is a splendid selection of heraldic beasts and emblems on the houses.



During the tour through the picturesque Lesser Town we would like to offer you a special activity next to Lennon's wall. Team-painting, spraying of graffiti on a large foam boards right on the wall. A wide variation of the coloured sprays and protective equipment will be provided.



Charles Bridge

Charles Bridge (Karlův most) is a 14th century stone bridge linking the two sides of Prague. This magnificent structure, one of the city's finest attractions, is the main pedestrian route connecting the Old Town with the Lesser Town / Prague Castle.

From Charles Bridge visitors can enjoy fairy-tale views of Prague. The wide expanse of the Vltava River flows beneath it, flanked on both sides by elegant buildings. And Prague Castle towers above in its eminent position. Here you are truly in the centre of the city.

RESTAURANT WHITE HORSE

Bily Konicek (White Horse) restaurant is located in one of the oldest houses on Staroměstské náměstí (Old Town Square), in extensive Roman cellars from the 12th century.

The restaurant offers a wide selection of traditional Czech, Czech regional and international cuisine. The chef specializes in fine cuisine, to satisfy the taste buds of even the most demanding gourmet. Meals are prepared from fresh high quality ingredients and seasonal products.

Live Jazz music from approx. 20:30 hrs.

- Cuisine: Locale and International
- Capacity: 110 seats in subdivided, well connected rooms - max. 55 + 20 + 10 seats
- Style: Roman cellars
- Location: City Centre – Old Town



*Excursion outside Prague***KARLOVY VARY**

Karlovy Vary is located about 120 kilometres West of the city. Although the road seems long, the landscape surrounding the road is one of the most beautiful in the country, with many villages, fields, meadows, forests and fields of hops, the plant from which the beer is produced. The city was founded in the 14th century by Emperor Charles IV. Since its foundation it has been a meeting place of great personalities of culture and world politics who have come to the site, surrounded by hills and forests of unparalleled beauty, in search of health, relaxation, and even entertainment. The city also has countless monuments, and there are few places that fail to show culture and beauty. Balneotherapy used many of the 12 springs that flow in the city, the most famous is called Vřídlo, whose waters reach 72°C.



The Grandhotel Pupp is one of the most prestigious hotels in Karlovy Vary.

Duration: 9 hrs. in total (transfer 1.5 hrs – 130 km)



CLUB DUPLEX – hot club in Prague!



Duplex Club is set on the top of a building, right in the heart of Wenceslas Square.

During the day, Duplex is an ideal location for a coffee and a snack. At night it transforms itself into Prague's more exclusive club. The winning factor in both though has to be the roof terrace, with magnificent views out over Prague. Inside the club itself, cool lighting, high-tech sounds and some of Prague's best DJ's await.

Capacity: Restaurant for max. 100 pax, club 600 pax

Location: City Centre – Wenceslas Square

Cuisine: International

- ✓ Unique view from the terrace, directly to Wenceslas Square
- ✓ Walking distance from hotel Yasmin



DEPARTURES – GOOD BYE!



SOCIAL RESPONSABILITY PROGRAM

Senator Meetings & Incentives helps: Children's Home Unhošť

There are several charities and environmental activities testifying to the fact that employees at Senator Meetings & Incentives are not indifferent to the society and environment in which they live. Senator used to support Hillary Clinton's Children home, for 3 years, but unfortunately this home was closed on September 01, 2011. From September we started our cooperation with a Children's Home in Unhošť. Even our clients are directly or indirectly connected to cooperation with the children's home. We give part of the commission from the events we organise to support the children's home. So by working with us, you obtain a complete professional service in the area of incentive events, but you also contribute to putting smiles on the faces of kids that are truly deserving. If you want to get actively involved in this project then there are various ways to do so, from financial help to donating toys, clothing, writing materials etc.

Participants can be involved personally in many activities in the Children's home (joined visit to Prague Zoo with children, garden works, children's activities, fence painting etc.), or they can donate.

ABOUT THE CHILDREN'S HOME

The children's home was found on the 15th June 1965. Currently, 37 kids live in the children's home and its capacity is 48 children. The youngest one is 2 years old and the eldest boy is 20. The kids go to school and high school as all other kids do. In the past year, 2 kids were given back to their families, 1 girl found a new family and 2 kids have decided to leave after their 18th birthday. In its 47-year history around 400 children has been taken care of here in the children's home in Unhošť and majority of them spent their whole childhoods under its roof and they do not forget. Kids who are provided new homes are always welcomed back and they often gladly visit.

SOCIAL RESPONSIBILITY PROGRAM

Senator Meetings & Incentives helps:
Children's Home Unhošť





Contact:

UK Representational Office
Moulden Marketing Limited

Gill Moulden

Tel: +441628 532020

Email: gill@moulden-marketing.co.uk

MouldenMarketing

Travel Marketing Professionals