

What's Hot

GILTEDGE

MouldenMarketing
Travel Marketing Professionals

Hotels

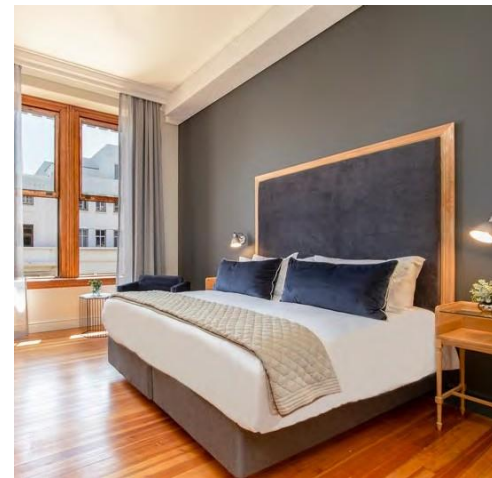


OLD BANK HOTEL

FEATURES



Located in Cape Town City Centre, the Old Bank Hotel is in a restored heritage building built in 1902. The hotel oozes charm and sophistication. Old meets new in this celebration of classic Victorian architecture and modern design. Each of the 44 rooms is decorated with modern elegance and luxurious finishes with an array of amenities like a minibar, laptop-compatible safe and Smart TV with satellite channels. The hotel is also in close proximity to some of Cape Town's highlights, such as the Castle of Good Hope, District Six, Two Oceans Aquarium and the V&A Waterfront. Step outdoors and stroll up to the Bo-Kaap or down to the vast and impressive Company Gardens.





KLOOF STREET HOTEL

FEATURES

As the name suggests, Kloof Street Hotel is situated in the popular Kloof Street, located close to Cape Town central. This spacious hotel still manages to hold on to the boutique feel that all Lion Roars properties are known for. The ground floor has a restaurant and a coffee shop to get your day started and a shared-working space and conference facilities. Striking natural decor is found throughout the hotel. Kloof Street Hotel's rooms are modern, use earthy and natural materials and are light and airy. The show-stopper rooms have to be the two exclusive and spacious Presidential Suites on the top floor, which offer trademark views of Cape Town's skyline and mountains.





KHWAI LEADWOOD

FEATURES



Khwai Leadwood is one of the newest camps by African Bush Camps. Located in Okavango Delta's community-run Khwai Concession on the edge of the Khwai River; the river separates the Moremi Game Reserve and the concession. The camp has six standard tents and one family unit, each tastefully decorated and offering modern comforts. During the day, guests can enjoy game drives, walking safaris and mokoro safaris (water levels permitting) on their search for lion, cheetah, leopard, wild dog, elephant, buffalo, hippo and giraffe. An additional drawcard of this area is that guests can go on night drives to spot some of Africa's nocturnal and more elusive animals. Adventure and relaxation are on offer as guests live out their ultimate safari experience – from setting off on a morning walking safari to enjoying a sunset gin and tonic overlooking the river.





TEMBO PLAINS CAMP

FEATURES

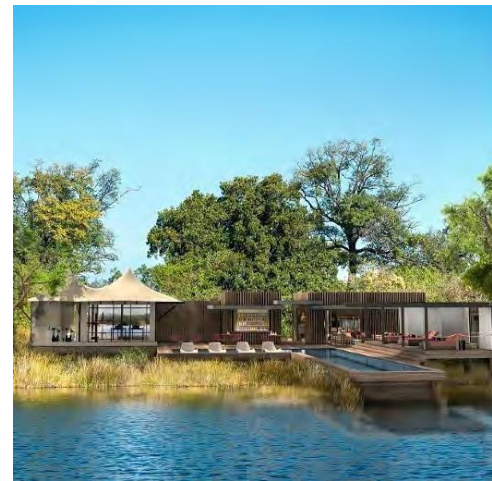
Set on the edge of the Zambezi River in the Mana Pools area of northern Zimbabwe, Tembo Plains Camp is the latest addition to the Great Plains portfolio. The new lodge is set to open in July 2021 and is already a member of Relais & Châteaux – the only camp in the whole of Zimbabwe given this honour. The camp has four double tents, each with a private indoor lounge area, outdoor swimming pool (with exercise bikes on a wide veranda) and outdoor dining area. Stunning, handmade bathtubs and indoor-and-outside showers give the tent a sense of 'home'. Each tent comes complete with a Canon professional camera and lenses, plus Leica binoculars for guests to use whilst at Tembo. The family suite has a shared lounge and dining area plus a pool, ideal for two couples or a family looking for the ultimate private safari. Tembo Plains Camp offers a range of guided activities such as game drives, walking safaris and canoe safaris.





DUMATAU

FEATURES



Brand new DumaTau is a small, luxury tented camp located in the private Linyanti concession of northern Botswana. The camp is built under a shady grove of mangosteen trees and overlooks a large hippo-filled lagoon within the Linyanti waterway system. The camp has seven guest suites and one family suite with ensuite bathrooms and an outside shower, as well as private plunge pools. Communal areas include a dining area where delicious meals are served, an authentic bush pub, a sitting room, an outdoor boma, and a swimming pool with a magnificent view of the open bush. Activities at DumaTau Camp are diverse and allow guests to experience excursions on both water and land. Day and night game drives in open 4x4 safari vehicles offer thrilling adventures, while walking safaris and mokoro voyages (traditional dugout canoe) offer a tranquil experience.



LITTLE DUMATAU

FEATURES

Little DumaTau is the exciting new sister camp to DumaTau, in the far north of Botswana. The intimate camp only has four tented rooms, all extremely spacious with their own lounges and individual plunge pools. This lodge features one of the most beautiful locations and fantastic game viewing. Days here are spent exploring the spectacular biodiversity of the wetlands on 4x4 game drives, boat safaris, and guided nature walks. This reserve is home to four of the Big Five, including vast herds of elephants and smaller species such as cheetah and wild dog. Little DumaTau is sure to be among the best camps in Botswana.





DORP HOTEL

FEATURES

Located on the slopes of Cape Town's Signal Hill in the historic Bo-Kaap neighbourhood, the Dorp Hotel has uninterrupted views of Table Mountain. This stunning Georgian-inspired building is surrounded by lively gardens and olive trees that add to the artfully curated decor. The hotel is decorated with a mix of antique, opulent and quirky pieces that creates a luxurious yet nostalgic atmosphere. All rooms face Table Mountain, and others open onto private courtyards with en-suite bathrooms which feature luxurious touches like homemade linen dressing gowns.

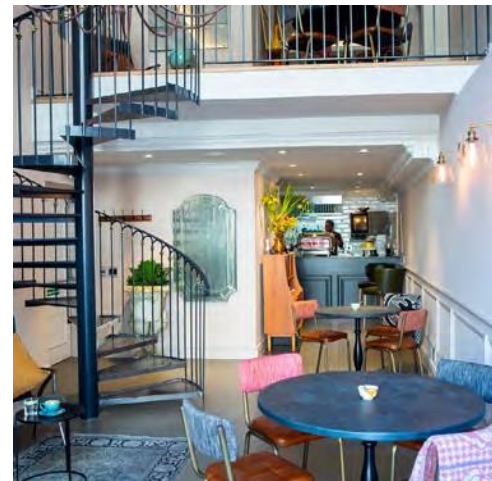
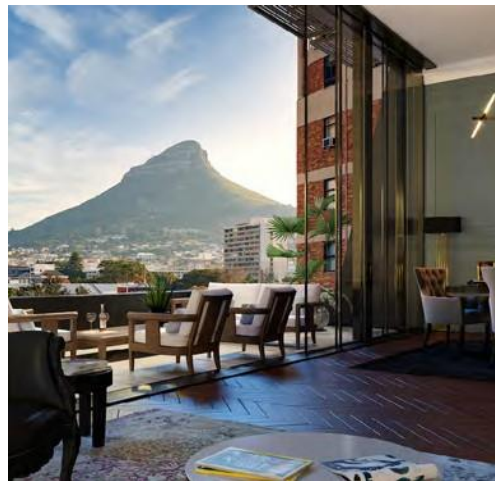




LABOTESSA

FEATURES

Nestled in the vibrant city centre of Cape Town, housed in a heritage building of a 17th-century church, Labotessa is an intimate hotel with just six suites plus a penthouse overlooking Church Square with views of Lion's Head. Labotessa is the culmination of a love for art, history, luxury, design and uncomplicated sophistication. All suites mix state-of-the-art technology and historical design. Each of the spacious suites has private elevators, a balcony and offer comfort and luxury. A stay within these centuries-old walls is more than an experience: it's a defining moment destined to become a treasured memory.



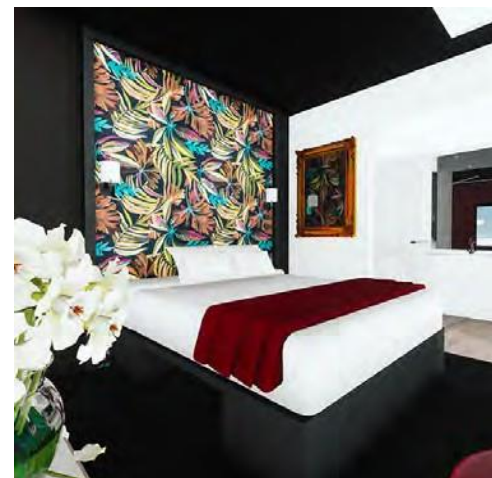


HOTEL SKY SANDTON

FEATURES

Opened in November 2020, Hotel Sky in Sandton, Johannesburg, made its debut with three robots: Lexi, Micah, and Ariel: South Africa's first hotel with operating robots. The robots help human staff at the property by delivering room service, providing travel information, and carrying luggage.

These robots are also the hotel's answer to travellers' increased desire for socially distant interactions. Hotel Sky Sandton offers a selection of room types ranging from Standard Rooms to Executive Rooms, all fitted with all the comforts you could desire. Whether you are travelling for business or on holiday with your family, the rooms offer the best possible combination of comfort and value.





CAMISSA HOUSE

FEATURES

Camissa House is a luxury boutique hotel on the slopes of Table Mountain with views of the Atlantic Ocean and the city of Cape Town. The boutique hotel has eight suites with air conditioning, a television, international adaptors, and Wi-Fi. The décor is inspired by the hotel's natural surroundings. It celebrates the true essence of Cape Town, its meandering history that connects the mountain and the sea. Camissa House is more than just a boutique hotel; it is a serene, mountainside hideaway that pays attention to detail and curated delights. Guests can expect to have a dedicated butler, pool, concierge service and a roof-top bar.





XIGERA SAFARI LODGE

FEATURES

The completely rebuilt Xigera (“kee-jera”) is a bold new safari lodge set in the heart of the Okavango Delta on the aptly named Paradise Island.

Opened in 2020, it is surrounded by deep channels and lush vegetation within a remote area of the productive Moremi Game Reserve. For much of the year this magnificent area epitomises the permanently flooded areas of the Okavango Delta, with palm-filled islands, riverine forests, interwoven channels and expansive floodplains.

With just 12 suites showcasing the finest southern African artisans, Xigera has been innovatively designed to protect its pristine environment; it is 100% solar powered, with a dedicated focus on sustainability and eliminating single use plastics. Every spacious suite will be fully air conditioned.



Restaurants



MAZZA

FEATURES

Famed Cape Town chef and restaurateur Liam Tomlin, known for serving up delicious dishes at Chef's Warehouse, has opened a new restaurant called Mazza, translated as "to share". The 55-seater Middle Eastern restaurant is the latest addition to Heritage Square at the top of Shortmarket Street, in Cape Town's CBD. Mazza is a small-plate restaurant celebrating the flavours of the Middle East. Tomlin calls it his "homage to Beirut". This is the perfect party venue or dinner with friends.





BARSTAUURANT

FEATURES

The revamp of the Glencairn Hotel is complete, and the new family-friendly Barstaurant at Glencairn is open! The restaurant is the brainchild of some food industry leaders and boasts a family-friendly atmosphere. The Glencairn Hotel building dates back to 1904 and has been meticulously preserved to showcase its unique features and character. The restaurant seats 80 diners and offers various seating areas, including a welcoming lounge area with a fireplace, a sushi bar, and cosy dining in the Sports Bar area. The outdoor dining area is popular with parents and their children as they overlook the lawn with a play area and jungle gym, with sea views in the distance. Barstaurant specialties include wood-fired pizzas and classic bistro staples such as fish and chips, cheeseburgers, and tacos, as well as a kids' menu with an interactive opportunity to make their own pizzas.

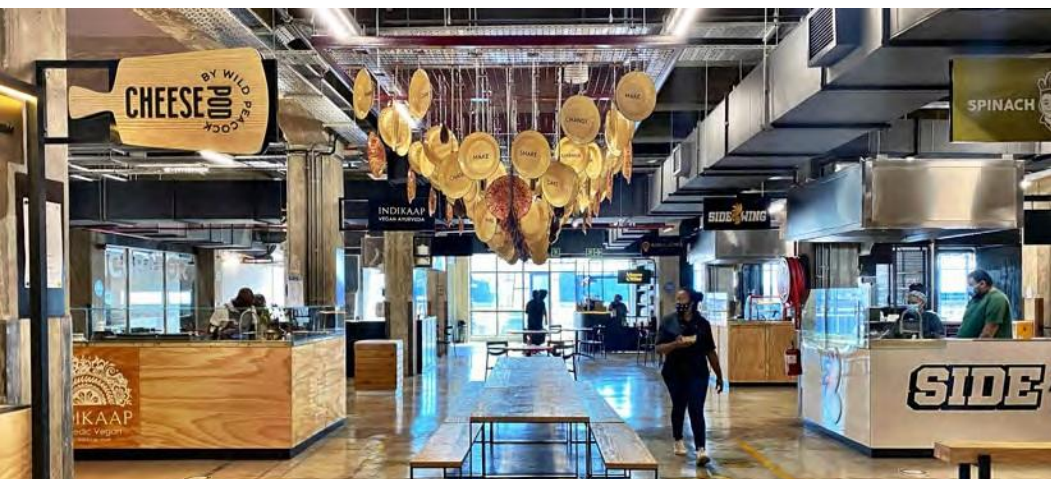




MAKERS LANDING

FEATURES

In December 2020, a brand-new district of the V&A Waterfront opened for young local foodie talent. Makers Landing is Cape Town's latest food community, where foodies hone their skills and is home to a market where you can sample authentic and affordable South African food. Think braaied meat, koeksisters and samosas and other local classics. Within the 3000 m² space, visitors will find a fresh food market, maker stations where people can watch the food being prepared, small co-op eateries and a demo kitchen where food lovers can congregate to engage with experts about food.





PROUD MARY

FEATURES

Proud Mary is Rosebank's new restaurant, serving up vibrant food in an equally vibrant setting. The innovative duo that brought us La Boqueria in Parktown North has worked their magic on this new venue – this time with even more glitz and glam. The restaurant is situated on the ground floor of The Bank: a 13-storey mixed-use marvel containing penthouse offices, the five-star Voco Hotel, co-working spaces and, of course, Proud Mary. Beautifully decorated with black brick walls and Art Deco touches, it has all been carefully selected to make dining feel like an experience. Patrons can look forward to tucking into tantalising sweet and savoury breakfasts, eclectic small plates, fire-grilled steaks, and even a fully-fledged raw seafood bar. It's safe to say that Proud Mary is set to be a fantastic addition to Joburg's food scene.





SEVEN COLOURS EATERY

FEATURES

One of the latest additions to the kaleidoscopic offering of cuisines at the V&A Food Market is Seven Colours Eatery. This is a passion project of chef Nolu Dube-Cele that dishes up home-style South African food that is as colourful as its flavourful. Chef Nolu is passionate about celebrating the rich diversity of traditional South African food, which, she believes, is often overlooked in contemporary dining. The name "seven colours" refers to a balanced plate of nutrient-rich, strikingly hued food (bright-red beetroot and yellow-coloured rice, for example), and by bringing this hearty soul food to the Waterfront, Nolu is serving a piece of home to her patrons from all over the world.





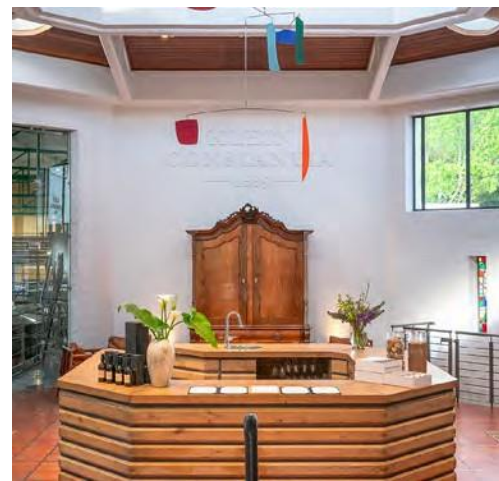
THE YARD

FEATURES

Situated in the V&A Waterfront's buzzing Silo District and a stone's throw from the Zeitz Museum of Contemporary Art Africa, The Yard is a conceptual space that houses a restaurant, bar, coffee shop and lifestyle store filled with a beautifully curated selection of mostly local ceramics, jewellery and accessories. Whether you pop in for a Rosetta coffee and a freshly baked pastry before a morning at the museum, or even a post-cultural salad or smoothie, The Yard is an inviting space. Think raw concrete and slick marble, plush leather seats and huge industrial style sliding windows that look out onto the Silo District and its oversized art.



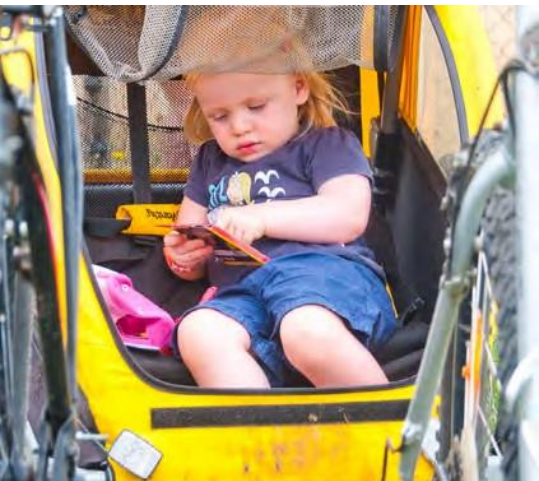
Activities



E-BIKES & MCC TASTING

FEATURES

Take a guided tour with Bikes 'n Wines through the expertly nurtured vineyards of Klein Constantia that's been named one of the world's most beautiful wine estates. Riding an e-bike is much easier than a normal bicycle, allowing you to take in the views. Stop at the top dam for a delicious, crisp MCC tasting. You can follow this with a premium wine tasting in the private estate cellar.



E-BIKE FAMILY TOUR

FEATURES

The route and distance of the Franschoek Family Tour has been created specifically by Bikes 'n Wines with families in mind, as have the child-friendly activities and wine estates. Parents can relax, soak in the sights, sounds and flavours of the Franschoek Winelands, while our trained guides keep a close eye on the kids who will be kept busy with their own ice-lolly and cooldrink pairings.



STAND UP PADDLING AT THE V&A WATERFRONT

FEATURES

Paddle through the canals of the Waterfront, or on the open ocean, with a qualified guide. Now this is a new way to experience Cape Town's epic views and spot some marine life. All equipment is provided by SUP Cape Town.



ABSEIL TABLE MOUNTAIN

FEATURES

For super-sized views of the Mother City – and an adrenaline rush second to none! Table Mountain is 1 000 metres above sea level, which makes it the world's highest commercial abseil. The famous landmark's kilometre-tall plateau towers over the city. As you are lowered into the vortex, the vast blue ocean stretches out before you, and Camps Bay, Lion's Head and The Twelve Apostles form a panorama of splendour.



OFF ROAD SCOOTER ON TABLE MOUNTAIN SLOPES


FEATURES

Freewheel your way along the slopes of Table Mountain on an exhilarating non-motorised scooter ride. Feel the rush of adrenaline as you whizz down hills and slopes! The two-wheelers are extremely stable and are used to navigate the slopes of the Swiss Alps during summer, making for a family and eco-friendly experience. Kids and adults will love them!

Contact us

Let's get in touch

GILTEDGE TOKAI OFFICE

 +27 (0) 21 713 0296

 info@gilt-edge.com

 Level 1 Unit 25, Westlake Dr, Westlake, Cape Town, 7945

 www.gilt-edge.com

UK Representatives | Moulden Marketing Ltd

 +44 (0) 1628 532020

 gilt@moulden-marketing.co.uk

 James House, Mere Park, Dedmere Road, Marlow, Buckinghamshire, SL7 1FJ

 www.moulden-marketing.co.uk