



## Vintage is cool!

### DAY 1

Arrive into Lisbon Airport  
Transfer by beetle to the Vintage Hotel  
Welcome dinner at ACantina

### DAY 2

Food tour on a VW Kombi  
And shopping!  
Free evening night out

### DAY 3

Vintage tram ride through monumental Belém  
Transfer out.

Prices per person, valid for minimum of 14 – maximum 20 participants,  
staying:

In single room: 865€

In double room: 670€

-Valid from July 1st 2020 to 31st December 2020; -Subject to availability at the time of the request; -Valid for new group requests



## Day 1

Arrive into Lisbon Airport

Transfer by beetle to the Vintage Hotel

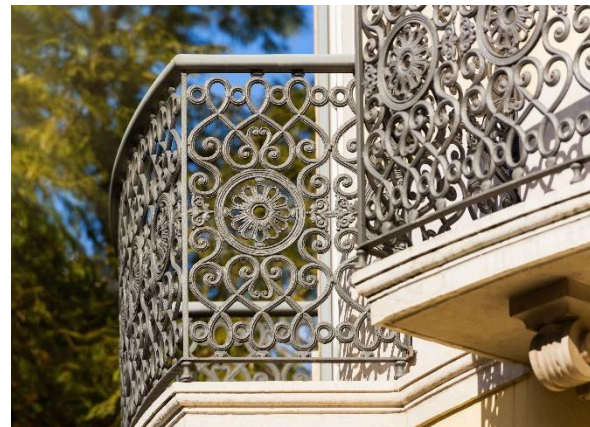
Welcome dinner at ACantina

## ARRIVAL TRANSFER



**Location:** Lisbon  
**Max capacity:** 3 ppl on each

Arrival transfer on a beetle! Sighseeing tour of Lisbon on the way to the hotel.



**Total rooms:** 107  
**Location:** Lisbon  
**Airport distance:** 30 minutes

**Location & environment:** This recently opened hotel is located just off behind the Avenida da Liberdade – one of the city's most emblematic boulevards. The historic city centre is within walking distance.

**Description of the building:** Tastefully restored 19th century façade.

**Bedrooms:** the bedrooms at The Vintage Hotel & Spa come with free WiFi and feature large windows and a flat-screen TV with satellite channels. Each open-plan en suite bathroom is stocked with bathroom amenities and a bathrobe. Décor is stylish featuring 1970s vintage furniture.

**Other facilities:** a rooftop bar with panoramic views over the city, a heated indoor pool, a spa and a fitness centre.



**Location:** Lisbon – LXFactory  
**Max. Capacity:** 40 ppl for groups

Cantina resulted from the restoration and conversion of the space, furniture and equipment that once belonged to printer Mirandela, and to others before that.

The kitchen blends the interventive spirit with universal flavours, all rooted in Portuguese tradition, held by wood ovens and permeated by the memories of the original canteen that served many generations of workers since 1846.

**Open for Dinner:** from Tuesday to Saturday.



## Day 2

**Food tour on a Ww Kombi  
And shopping!**

**Free evening night out**

## EAT & SHOP ON A KOMBI



**At the very heart of any visit to Lisbon, or Portugal in general, must be the food and drink. Lisbon is full of cafés, restaurants, bars, bakeries, butchers and much more. This tour is designed to get your legs moving and your taste buds going!**

**Our guide will share local insights with the guests while hopping from café to bar to restaurant whilst explaining the local delicacies being tasted along the way.**

**Almost all of Lisbon's worthwhile vintage shops are congregated in the heart of the city center, meaning we will have some time to shop!**

**Our main goal is to give guests a very real first contact with Lisbon, its people, its culture and its food as they make their way round the lively areas of central Lisbon.**









Pensão Amor is a former guesthouse where ladies of the world's oldest profession got together with sailors is now one of the most popular bars in town. This is due to a naughty and relaxed atmosphere, but also to a décor recalling the history of the building. The ceilings were painted with frescoes, the walls are covered with mirrors, paintings and old posters, and decorative pieces give the space an old burlesque atmosphere spread through several rooms.



## Day 3

Vintage tram ride through monumental Belém

Transfer out.

## VINTAGE TRAM RIDE





The group will be transported across town by the city's wonderful old trams, on to Belem monumental area - a district of Lisbon located just to the west of the city centre. It is from here that many Portuguese explorers embarked on their voyages of discovery. The Belem Tower, built in 1514 to commemorate Vasco da Gama's famous sea voyage to India and the nearby modern Monument to the Discoveries, dedicated to all Portuguese explorers are have become icons of the city. The Hieronymites Monastery (Mosteiro dos Jeronimos) was classified by UNESCO, along with the nearby Belem Tower, as a World Heritage Site in 1983.

No visit to Belem would be complete without trying some of its legendary pastries. These are the famous cream cakes made from puff pastry filled with milk, cream, vanilla and.... well, nobody quite knows. That is just how it is. The recipe for Belem Pastries is one of the best kept secrets in Portuguese gastronomy.



**FAREWELL!**  
**SAFE TRAVELS BACK HOME!**



**Maria Verissimo – Senior Project Manager**

Av. da Liberdade 245 7º G, 1050-056 Lisbon, Portugal

Email: [verissimo@cititravel.pt](mailto:verissimo@cititravel.pt)

Tel. +351 (0) 213 261 570

Website: [www.cititraveldmc.com](http://www.cititraveldmc.com)

**MouldenMarketing**

Travel Marketing Professionals

UK Representative

**Moulden Marketing Ltd**

James House, Mere Park, Dedmere Road, Marlow  
Buckinghamshire, SL7 1FJ

Email: [cititravel@moulden-marketing.co.uk](mailto:cititravel@moulden-marketing.co.uk)

Tel: +44 (0) 1628 532020

Website: [www.moulden-marketing.co.uk](http://www.moulden-marketing.co.uk)